



## 29HO12517 WOODMARSH TALISMAN \*TL\*TV

by Andrew Rutter

From the family that gave us Rudolph comes one of the most complete sires to ever be sampled in the UK.

### Pedigree Information

Sire: Ladino Park Talent  
 Dam: Woodmarsh Mtoto Melody 8 EX92 2E 100tonnes SP  
       Best Record: 3x 305d 16774kgs 3.42%F 574kgs 3.28%P 550kgs  
 MGD: Woodmarsh Formation Melody 4 EX92 2E 14\* 100tonnes SP  
       Best Record: 3x 305d 17719kgs 3.64%F 644kgs 3.39%P 600kgs  
 3<sup>rd</sup> D: Woodmarsh Melody VG89 11\* SP  
       Best Record: 3x 305d 16107kgs 4.46%F 718kgs 3.55%P 572kgs  
 4<sup>th</sup> D: Comely Southwind Melody 2 EX93 3E 9\* 110tonnes  
 5<sup>th</sup> D: Startmore C M Melody 2 EX91 27\* 80tonnes  
 6<sup>th</sup> D: Startmore T Threat Tina EX 8\*  
 7<sup>th</sup> D: A Jim-Mar-D Astronaut Gail EX 11\*

### Family Information

Tracing back via a Canadian import, Talisman is backed by eight generations of EX or VG. This family has established itself in the upper echelons of the UK rankings for years now, with the three closest dams of TALISMAN all being in the top 50 cows at the same time at one point. Formation Melody is an incredible milk cow, stopping traffic at Woodmarsh thanks to her high records and now breeding ability, she has one son returned to stud and has left 12 daughters, all scored VG or higher, averaging 88 points. The highest scored daughter is the dam of Talisman, who herself has already bred four EX or VG daughters including an 87 point full sister to TALISMAN.

### Daughter Information

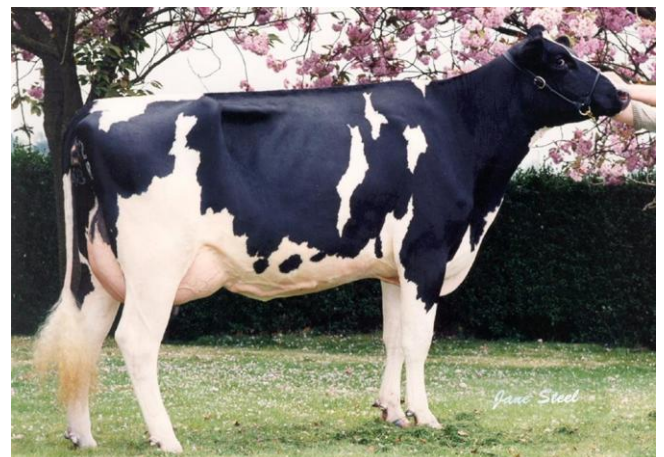
TALISMAN'S, like the cow family, first catch your attention in the udder department. They are hitched well above the hock and stamped with a deep, strong ligament. Fore udders are veiny and classily attached, and the texture is silky smooth. Frames are moderately sized with daughters average height. They are stamped with wide long rumps and an ideal slope from hook to pin. Legs are clean through the hock, and daughters walk fluidly and easily.

### Mating Information

TALISMAN is a calving ease sire and will cross well over daughters of SHOTTLE, BOLTON, REECE, DIEHARD, and Oman and Outside blood.



Daughter  
Woodfarm Talisman Molly



MGD  
Woodmarsh Formation Melody 4 EX92