

Genus Beef Calving Survey



Proven British Blue Sire: Stockmerle CRUISE



Herdbook No:
20071303

Genus AI Code:
BB1112

Royalties: Payable to society
(£30 + VAT)

Calving Survey

Statistics

Reliability: 95%
Calves: 339
Herds: 326



	Below average BSI score 70	Average BSI score 100	Excellent BSI score 130	Actual sire statistic
Calving Ease (cows)		96		3.2%
Gestation Length (Days)		100		283 days
Calf Quality			130	65%
Calf Colour				75% Blue Roan

Genus ABS Breed Averages:

Calving Ease (cows) 3.0%

Gestation Length 283 days

- **CRUISE** is now a proven Rock Solid bull with 135 calves in 121 herds.

- Cruise is better than breed average for calving ease.

- Cruise offers fantastic calf quality, whilst maintaining breed average of 283 days for gestation length.

Sire
Gitan Du
P'Tit Mayeur

Dam
Stockmerle
Wendy

PGS
Cubitus Du Pre Rosine

PGD
Oie Du Vanova

MGS
Affute Du Ry Ossogne

MGD
Annanwater Penny



GESTATION LENGTH



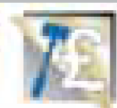
CALF QUALITY



GROWTH



CONFORMATION



CROSS-BRED SALES

The information given is correct to the best of our knowledge and belief Genus does not accept liability for any losses which may result from any error

Genus Breeding Ltd, Alpha Building, London Road, Nantwich, CW5 7JW
Telephone: 0870 162 2000 Fax 01270 616702 www.genusbreeding.co.uk



GENUS BEEF. PROVEN TO BE THE BEST.

