



## 29HO12209 PICSTON SHOTTLE EX96-ET \*TL\*TV

by Andrew Rutter

SHOTTLE is the sire that really put the UK on the map for holstein genetics. Fabulous first crop daughters developed into tremendous cows, and SHOTTLE took top position for not only type but Profitable Lifetime Index, proving that not only do they look good, but they pay the bills too. Now SHOTTLE is coming into his second crop, the information and feedback looks set for everyone to fall in love with him all over again.

### Pedigree Information

Sire: Carol Prelude Mtoto  
Dam: Condon Aero Sharon EX91 60\* Brood Cow (Sixth generation VG or EX)  
Best Record: 4-00 2x 305d 16051kgs 4.00%F 684kgs 3.40%P 545kgs  
MGD: Condon Inspiration Sally VG87  
Best Record: 4-08 2x 324d 11934kgs 4.00%F 479kgs 3.20%P 380kgs  
MGGD: Condon Commissioner Sally VG85 1\*

### Family Information

This line has been developed following the purchase of Sharon by the Pickford family (Picston) and Antony Brough (Tallent) and the family is thriving in both herds today resulting in international stud interest. Sharon herself has bred 14 EX and 20 VG progeny to date, and the numbers are rising rapidly for grand daughters and great granddaughters.

### Daughter Information

Consistency is the keyword with SHOTTLE, one daughter after another exhibits the same cow-making attributes. Rumps have so much width, especially through the pins with ideal slope. Deep heeled feet and extremely good legs are complemented with class leading locomotion. Frames are all Sharon, hard topline and strong loins, and capacity that develops calving after calving. SHOTTLE also leaves an exciting injection of style which makes them stand out from the calf pens right through to when they start coming through the parlours.

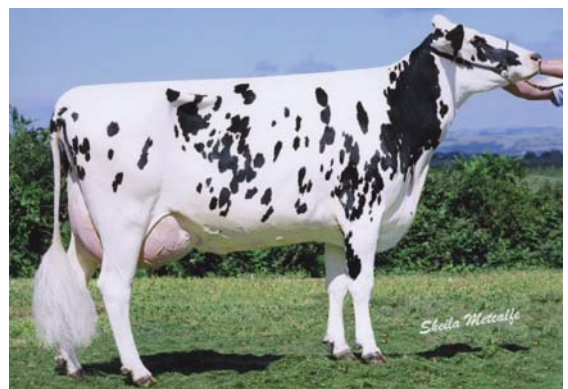
### Mating Information

SHOTTLE is calving ease and will mate well to daughters of DIE-HARD, LOOKOUT, BOLIVER, MELODY, ROY, PIPPEN, Oman, Principal, Durham and BW Marshall

### Shottle Daughters



Bassingthorpe Shot Daisy EX94



Overside Shottle Sunshine EX92