



*Aberdeen
Angus*

*Lorabar
Mighty
Prince*

Ear Tag No. UK583169 400113

Sire
Rawburn Transformer

PGS
Hoff Great Western

PGD
Willabar Tilda

Dam
Rawburn Mattie Princess

MGS
Nichols Super Systems

MGD
Rawburn Maori Princess



Progeny of Lorabar Mighty Prince

**Genus ABS Calving Survey
& Beef Sire Index (BSI)**

| | Calving Ease (%) | Gest. Length (days) | Calf Quality (%) |
|------------|------------------|---------------------|------------------|
| EBV | 1.0 | 281 | 44 |
| BSI | 115 | 106 | 110 |

**Estimated Breeding Values (EBV)
& Genus ABS Beef Sire Index (BSI)**

| | Calving Ease Dtrs (%) | Birth Weight (kg) | 400 Day Weight (kg) | 600 Day Weight (kg) | Milk (kg) |
|------------|-----------------------|-------------------|---------------------|---------------------|------------|
| EBV | +6.6 | +1.4 | +51 | +68 | +10 |
| BSI | 127 | 108 | 109 | 116 | 125 |

Beef Sire Index (BSI) Key: 100 = Breed Average 70 = Lowest possible score 130 = Maximum possible score

- Easy calving Angus sire.
- High milk value makes Mighty Prince an ideal maternal sire.
- Short gestation length.
- Tremendous growth and conformation.
- Calves are born easily but are significantly heavier at weaning.



Simmental

*Dinton
Nautical*

Ear Tag No. UK327249100012

Sire
Salisbury Gladiator

PGS
Agardsley Bruno

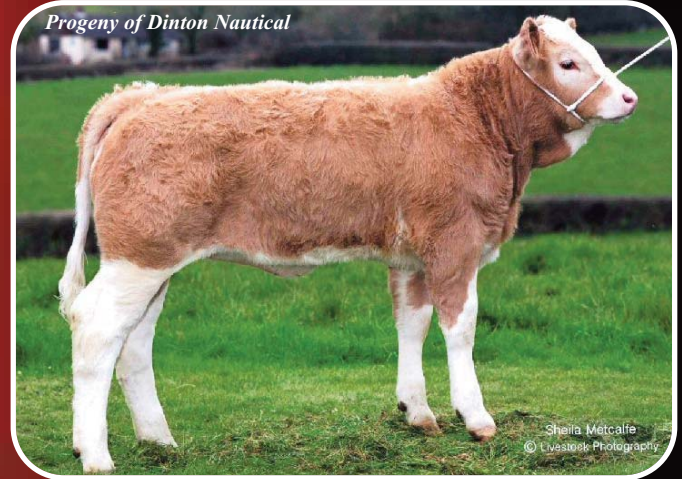
PGD
Yanley Glenda

Dam
Dinton Henrietta

MGS
Brinkton Brilliant

MGD
Townsend Lucy

Progeny of Dinton Nautical



Genus ABS Calving Survey & Beef Sire Index (BSI)

| | Calving Ease (%) | Gest. Length (days) | Calf Quality (%) |
|--------------|------------------|---------------------|------------------|
| Score | 1.5 | 283 | 52 |
| BSI | 122 | 118 | 100 |

Estimated Breeding Values (EBV) & Genus ABS Beef Sire Index (BSI)

| | Calving Ease Dtrs (%) | Birth Weight (kg) | 400 Day Weight (kg) | 600 Day Weight (kg) | Milk (kg) |
|------------|-----------------------|-------------------|---------------------|---------------------|------------|
| EBV | -0.4 | +1.9 | +46 | +51 | +3 |
| BSI | 130 | 117 | 105 | 113 | 121 |

Beef Sire Index (BSI) Key: 100 = Breed Average 70 = Lowest possible score 130 = Maximum possible score

- Easy calving Simmental sire.
- Superb milk values for heifers.
- Excellent calf quality and growth.
- Calves are born easily but are significantly heavier at weaning.