

Langley Evolution FH2601

100% Friesian

D.O.B : 26/11/2004

Selected for

Herdbook no: 20000000626232

EPTA April 2010 : Milk -165kgs
 Fat 11.8kgs +0.25%
 Ptn 2.6kgs +0.10%
 PIN £18 PLI £95
 19 Dtrs in 12 Hds



Health Traits:
 +0.1 Lifespan -8 SCC
 +2.0 Fertility Index

3 Generation Sire Stack: Hylke x Pegasus x Helmsman

SIRE: Tittenser Hylke

DAM: Langley Pegasus Ethel BFE91

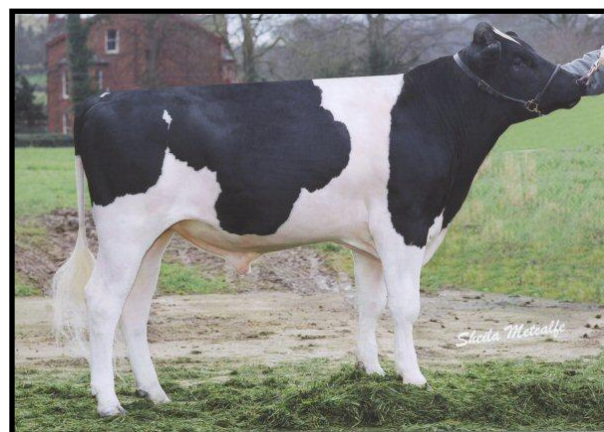
Lact	Age	Milk	Days	Fat %	Ptn %
1	03/00	7785	305	4.63	3.30
2	03/11	9531	305	4.69	3.62
3	05/09	12389	305	4.19	3.43
4	08/10	11674	305	4.85	3.42

G DAM: CBS Ethel BFG+80

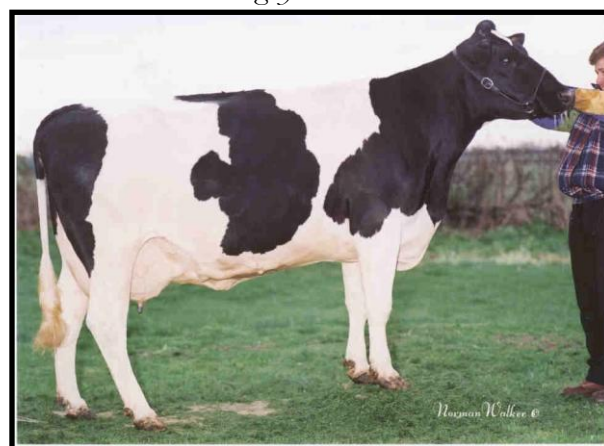
Lact	Age	Milk	Days	Fat %	Ptn %
1	02/03	7509	305	5.19	3.30
2	03/03	8039	305	4.97	3.33
3	04/03	12063	305	4.42	3.10
4	05/04	10836	305	4.70	3.14
5	06/06	10298	305	4.86	3.17
6	08/00	8985	305	4.90	3.26
7	09/06	8594	305	4.05	3.22
8	10/10	9740	305	4.66	3.18
9	12/05	10975	305	4.39	3.27

3.DAM: Claybury Brandy Ethel 2 BFE92

Lact	Age	Milk	Days	Fat %	Ptn %
3	04/07	7940	305	5.14	3.32
4	05/07	8376	305	4.74	3.34
5	06/09	7274	305	5.10	3.01
6	08/01	6866	305	4.60	3.28
7	09/06	6866	305	4.70	3.40
8	11/00	8840	305	4.40	3.15



Langley Evolution



Langley Pegasus Ethel

Langley Evolution FH2601

- Evolution daughters combine Friesian type with high fat and protein percentages – they take after Tittenser Hylke, his popular sire.
- Evolution's dam is bred from an impressive line up of long lasting cows: CBS Ethel (100 tonnes in nine lactations), Claybury Brandy Ethel EX92 (8 lactations), Claybury Bitter Ethel EX (12 lactations), Claybury Princess Ethel (10 lactations) and Claybury Lionel Ethel (15 lactations).