

ABS Masquerade Red FH3489

D.O.B : 11/07/2007

Selected for

Herdbook no : 63000481926079

EPTA April 2010 : Milk 113kgs
 Fat 4.9kgs +0.01%
 Ptn 8.1kgs +0.06%
 PIN £ 15 PLI £ 98



3 Generation Sire Stack: Classic x Lentini x Tulip

SIRE: Poos Stadel Classic

DAM: Apina Massia 20 VG89

Lact	Milk	Days	Fat %	Ptn %
1	10574	305	4.41	3.41

Nucleus tested. Bred several VG88/89 daughters

G DAM: Apina Massia 14 VG85

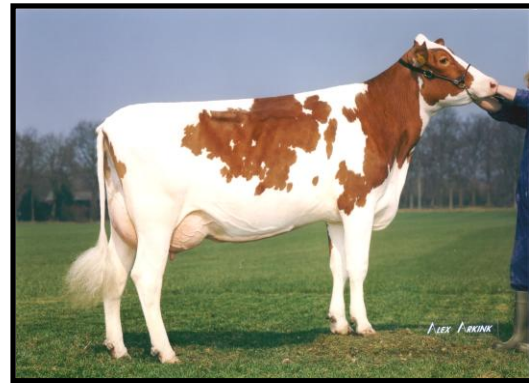
Lact	Milk	Days	Fat %	Ptn %	CPI
1	8489	305	5.02	3.92	131%
2	10592	305	4.78	3.94	

3.DAM: Massia 13 VG86

Lact	Milk	Days	Fat %	Ptn %	CPI
1	9891	305	5.12	3.87	133%

4 DAM: Massia 9 VG85

Lact	Milk	Days	Fat %	Ptn %	CPI
1	9615	305	5.02	3.81	149%
2	10953	305	5.25	4.04	137%
3	12915	305	5.17	3.83	125%



Apina Massia 20 VG89



Southland Maria Red VG89 (Sister to Masquerade)

ABS Masquerade Red FH3489

What an impressive pedigree. Dam of Masquerade is the fantastic Massia 20 VG89, who was sampled at the Delta nucleus test herd and was rated as one of the best red cows to ever go through the programme. She has bred several VG two year old daughters today, including the impressive Southland Maria Red who scored 89 points as a heifer. Massia 20's full sister is the noted Massia 21 EX, who has been contracted to a number of studs around the world. This family has already started producing proven sons, the highlight so far being Tocar, the current No 1 Red and White Sire in Germany. He is a grand son of Massia 13. Classic is a highly rated type sire, and is noted for his strong longevity traits, and crossing him over this exceptional maternal line will blend strong production, outstanding components, superb udders and long lasting legs and feet. Masquerade himself is a long, stylish bull who parades well on super feet and legs.